

ProKure®

Deodorizing (vapor) delivery system (pouch) for the generation of chlorine dioxide for use (as control of) (to kill) (to eliminate) odor-causing bacteria, mold and mildew and chemical odors in un-occupied confined spaces; automobiles (Cars, Trucks, RV's, Trailers), commercial storage and refuse containers, boat cabins and porta-potties [list use site] where moisture is present.

ACTIVE INGREDIENT: Sodium Chlorite: 16%
OTHER INGREDIENTS: 84%
Total: 100%

Available Chlorine: 25%

**KEEP OUT OF REACH OF CHILDREN
CAUTION**

See full directions and first aid [inside package] (on) [back/side/top/bottom/inside label] [panel/label/booklet]. [See back for directions.]

EPA Registration No. 87508-2-89334
EPA Establishment No. 62788-AL-001
U.S. Patent No: 8361409

Net Weight: XX oz (XX grams)

Distributed by
ProKure Solutions, LLC
5013 E. Washington Street, Suite 130
Phoenix, AZ 85034
www.prokuresolutions.com

FIRST AID

If in Eyes: Hold eye open and rinse slowly and gently with water for 15-20 minutes. Remove contact lenses, if present, after the first 5 minutes, then continue rinsing eye. Call a poison control center or doctor for treatment advice.

If on Skin or Clothing: Take off contaminated clothing. Rinse skin immediately with plenty of water for 15-20 minutes. Call a poison control center or doctor for treatment advice.

If Swallowed: Call poison control center or doctor immediately for treatment advice. Have person sip a glass of water if able to swallow. Do not induce vomiting unless told to do so by the poison control center or doctor. Do not give anything by mouth to an unconscious person.

If Inhaled: Remove victim to fresh air. If person is not breathing, call 911 or an ambulance, then give artificial respiration, preferably mouth-to-mouth if possible. Call a poison control center or doctor for treatment advice. Get medical attention.

Have the product container or label with you when calling poison control center, doctor or going for treatment. For emergency information concerning this product, call the National Pesticides information Center (NPIC) at 1-800-858-7378 seven days a week, 6:30 am to 4:30 pm Pacific Time (NPIC).

Note to Physician: Probable mucosal damage may contraindicate the use of gastric lavage.

PRECAUTIONARY STATEMENTS

HAZARDS TO HUMANS AND DOMESTIC ANIMALS

CAUTION: Causes moderate eye irritation. Harmful if swallowed, inhaled or absorbed through skin. Avoid contact with skin, eyes or clothing. Avoid breathing vapor. Wash thoroughly with soap and water after handling and before eating, drinking, chewing gum, using tobacco or using the toilet. Remove and wash contaminated clothing before reuse.

ENVIRONMENTAL HAZARDS

This product is toxic to fish and aquatic invertebrates. Do not contaminate water with this product.

PHYSICAL OR CHEMICAL HAZARDS

This product contains an oxidizing agent. Do not mix with acids or chlorine. Avoid any contact with flame or burning materials. Once this product is activated with water, it will produce dangerous levels of chlorine dioxide gas. Chlorine dioxide gas is a strong oxidizing agent and is irritating to the respiratory tract. The symptoms of chlorine dioxide intoxication depend on its concentration and on the exposure time; they include lacrimation, headache, vomiting, severe cough, asthmatic bronchitis, dyspnea and even death. Do not inhale chlorine dioxide. Exposure to high concentrations of chlorine dioxide can cause death; do not allow unprotected persons to be exposed to chlorine dioxide gas.

STORAGE & DISPOSAL

Do not contaminate water, food or feed by storage or disposal.

STORAGE: Store this product in the original unopened packaging until ready for use. Store in a cool, dry, well-ventilated area away from heat or open flame. Store in an area that is inaccessible to children.

EMERGENCY HANDLING: In case of spill, contamination or decomposition, do not reseal package. If possible, isolate package and discard it in open and well-ventilated area.

DISPOSAL: Nonrefillable container. Do not reuse or refill this container. Dispose of accumulated liquid (if any) and discard empty foil pouch and spent white pouch in an outdoor refuse container.

DIRECTIONS FOR USE

It is a violation of Federal law to use this product in a manner inconsistent with its labeling.

Recommended dosage is at a rate of 1 gram per every 100 ft³ for everyday smells. For heavy-duty odors, use 2-2.5 grams per every 100 ft³, or refer to the below chart for specific use site recommendations.

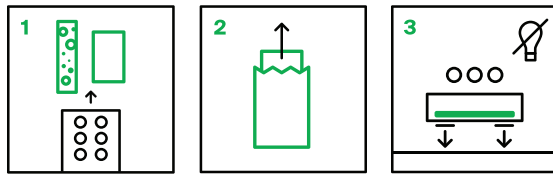
Size of Pouch	Approx. Dimensions	Approx. Volume	Example Area
5 Gram	10'H x 10'L x 5'W	500 ft ³	Small cars Small boats Trash cans Porta-potties
10 Gram	10'H x 10'L x 10'W	1,000 ft ³	Sedans Boats Dumpsters
25 Gram	15'H x 15'L x 10'W	2,250 ft ³	SUVs Large boats Small RVs
50 Gram	15'H x 15'L x 20'W	4,500 ft ³	RVs Storage Containers Shipping Containers

OPTION 1 – SLOW RELEASE

- Read entire label before using this product.
- People and pets must not be in the area undergoing treatment while product is activated. Use the enclosed caution placard to record treatment/safe re-entry time.
- Ventilate (and turn on lights) for one (1) hour before re-entry.

WHEN TO USE: Use [product] (Slow Release System) to eliminate (kill) (control) mold and mildew odor(s) and other foul smells from forming.

HOW TO USE:



STEP 1: Remove contents from the plastic (clamshell) container.

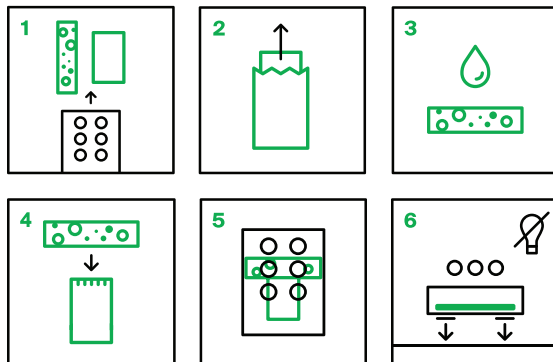
STEP 2: Open silver foil packet and remove white pouch. DO NOT OPEN WHITE POUCH.

STEP 3: Place the white pouch into the (clamshell) container. Close container and place (hang) it (on a stable, level surface) in a central location (with the holes facing up). (You may also use the tape strips on the back of the clamshell to adhere to a wall.) Repeat treatment [seasonally] [before (winter) (long-term) storage] [before odors reappear].

OPTION 2 – FAST RELEASE

- Read entire label before using this product.
- People and pets must not be in the area undergoing treatment while product is activated. Use the enclosed caution placard to record treatment/safe re-entry time.
- If applicable, turn on air conditioning or ventilation to circulate air. (Turn off lights.)
- Allow at least 4 to 6 hours (or overnight) for the system to work.
- Ventilate (and turn on lights) for one (1) hour before re-entry.

HOW TO USE:



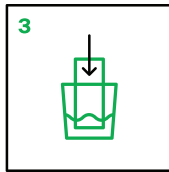
STEP 1: Remove contents from the plastic (clamshell) container.

STEP 2: Open the silver foil packet and remove the white pouch. (DO NOT OPEN WHITE POUCH).

STEP 3: Saturate sponge with water.

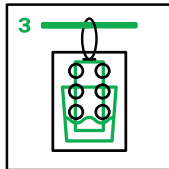
STEPS 4 & 5: Slide end of the white pouch that has square indentations into the slit of the sponge and place it back into the plastic container.

STEP 6: Snap the container securely closed (and place it on a stable, level surface in a central location with the holes facing up. (Do not hang the container.)



-or-

STEP 3: Place the white inner pouch(es) with the indentations side down in a(n) (plastic cup) (tray) (container) (air mover) filled with 1.5” inches (3.8cm) of water.



-or-

STEP 3: (When using with Hanging Accessory) Place the provided “cup” into the plastic clamshell container as shown in the illustration below. [ILLUSTRATION] Place white inner pouch into the cup and snap the clamshell securely closed. Use the provided hanger to deploy the closed clamshell as shown in the illustration below. [ILLUSTRATION] Do not shorten the hanging cord.

Repeat treatment if odors reappear.

COVERAGE AREA: Use one pouch per (area)(room)(container)(vehicle) for everyday smells. When using multiple pouches (for heavy-duty odors), place strategically for even coverage of the (area)(room) (container)(vehicle).

SPECIFIC USE DIRECTIONS

Outside Storage Containers (Small Storage Containers, Commercial Storage Containers, Commercial Shipping Containers, Sheds): Place the unit in an open area.

Outside Waste & Refuse Containers (Commercial Trash Cans, Receptacles, Dumpsters): Place the unit in, above or adjacent to the trash can or dumpster.

Porta-Potties: Place the unit near the center of the porta-potty in an open area, and out of reach of children and pets.

Boat Cabins -or- Recreational Vehicles (RVs): Place the unit near the center of the (cabin) (vehicle) (interior) in an open area out of reach of children and pets. Open any doors, cabinets and drawers that require treatment.

Automobiles -or- Vehicles (Cars, Trucks, Trailers): Place the unit near the center of the car (vehicle) (truck) (trailer), on a stable, level surface—such as an armrest or on any other central location—with holes facing up. Open glove box or any compartments that require treatment. Close doors and windows.

Hotel [Hospitality] Rooms: Place back into the plastic container. Snap the container securely closed and place on a stable, level surface in the middle of the room with the holes facing up. Close drapes, turn off air conditioning (or other ventilation), and open any doors, cabinets or drawers that require treatment, including the bathroom door. Allow at least 4 hours for treatment to work. People and pets must not be in the room during treatment. Limited re-entry during treatment is OK. (Hang included sign on door to indicate treatment time.) Upon re-entry, turn on air conditioning (or available ventilation) and open windows if able to do so. Allow 1 hour to ventilate room before occupying. Room will smell clean and fresh.

Commercial Buildings, Retail and Industrial Centers, Indoor Agricultural Facilities and Greenhouses, and Residential Properties (That Are Undergoing Water, Smoke, Forensic Restoration, Sewer Back Up, Odor Control Or Other Restoration Services): (Remove all odor source and clean all heavily soiled surfaces prior to using [Product].) (Follow all PPE recommendations for areas undergoing restoration.) Determine appropriate number of packets based on cubic foot calculation and odor severity. Cover [(CO₂ generators) (and) (smoke detectors) (using plastic bags and masking tape)]. If there is a

ventilation system is dedicated solely to the space being treated, set for recirculation. Otherwise, turn off system and close duct(s). Place (Product) no closer than 18" to 24" (45 to 60cm) away from fabrics, leather, electronics, mirrors, metals or plated surfaces. Use an (air mover) (fan) to increase circulation and distribute gas. [Use of (fan) (air mover) increases ventilation and provides better coverage. (Follow manufacturer's directions when using with a device)]

Additional Use Sites: Greenhouses, hydroponic facilities, indoor & outdoor agricultural facilities, distilleries, wineries (not for use with/on plants/crops/feed). Commercial buildings, retail and industrial centers, and residential properties (that are undergoing water or smoke restoration, sewer backup, odor control, or other restoration services).

DEODORIZATION APPLICATIONS

DEODORIZING TREATMENT OF VENTILATION SYSTEMS:

This product can be used as a deodorizer in ventilation systems to eliminate (chemical) (musty) (unpleasant) odors. Before activating the product, make sure the ventilation systems are turned off (disconnected) or set to recirculation. Remove all loose soil and debris and clean all duct work by using a commercial duct cleaning system or service prior to deodorizing. Ensure all parts are mechanically sound, free of leaks, and other defects before and after treatment. Follow directions for use on the label to activate the product. Do not exceed 500 ppm. Allow 1 hour to ventilate prior to re-occupation. Dispose of spent white pouch in an outdoor refuse container. Follow all precautionary and first aid instructions on package label.

ADDITIONAL MARKETING CLAIMS

1. AUTO ODOR ELIMINATOR
2. ELIMINATES & PREVENTS (Mold & Mildew Odors) (FOUL ODORS)
3. DEODORIZING DELIVERY SYSTEM
4. (Not an) (More than an) Air Freshener
5. Actually Removes Foul Odors Caused by (Cigarettes) (Cigars) (Food) [and] (Pets)
6. [Removes] [Eliminates] [Works on] [Deodorizes] (smoke) (food) (pet) (cigarette) (vomit) (urine) (rotten food) (mold) (mildew) (fish) (skunk odor) (and) (other foul) smells
7. DEEP PENETRATING VAPOR ACTION
8. Removes foul odors from (car) or (truck interiors) from (cigar) or (cigarette smoke), (spoiled food), (pet odor), or (musty mold or mildew odors)
9. One unit will treat most cars or SUV's
10. CAR ODOR ELIMINATOR
11. BOAT ODOR ELIMINATOR
12. FOR PROFESSIONAL USE BY CULTIVATOR/ RESTORATOR/ TECHNICIAN/ CONTRACTOR/ VETERINARIAN/ CLINICIAN/ INSTALLER/ BUILDER

13. RV ODOR ELIMINATOR
14. Works [in] [as little as] (Overnight) (4-6 hours) (4 hours)
15. Removes Smoke, Food, Pet, and other Foul Smells
16. One unit will treat most cars and SUVs
17. Mold & Mildew Odor Control
18. A great way to deodorize the interior (after a fishing trip) (in a used car) (from) (alcohol) (cigar), (bait), (vomit), (puke) (throw up) (urine) (bodily fluid odors) (agricultural odors) (manure odors) (rotting plant odors) (hay smell) (farm odors) and (rotten) (spoiled) (decaying) (food smells) odors or to freshen the interior (before a dinner cruise).
19. ClO₂ (chlorine dioxide) deodorizer
20. Deodorizer
21. Deodorizes
22. (Auto) (car) (truck) (cabin) (boat) (storage container) deodorizer
23. Odor remover
24. Odor control system
25. (Do it yourself) (DIY) [no expensive machines (machinery) required]
26. Deep penetrating [(ClO₂) (chlorine dioxide)] [(vapor) (gas)] (action)
27. Removes residual odors
28. Ideal for long term storage
29. Ideal for use in (boats), (RVs), (Autos) & (Storage) (Containers)
30. Formulated to quickly control & Eliminate Mold/Mildew Odors & Other foul smells.
31. Take control
32. Own odor
33. Fast, Easy, Effective
34. Frequent (regular) use formula
35. Great for frequent use
36. [Controls] [Kills] [Eliminates] (tough) odors caused by (bacteria) (mold) (mildew).
37. [Controls] [Kills] [Eliminates] (tough) pet odors (caused by bacteria)
38. [Controls] [Kills] [Eliminates] odors caused by mold and mildew
39. Eliminates (removes) (tough) odors (caused by) (bacteria) (mold) (and) (mildew)
40. Gets to the heart of (tough) odors
41. Odor fighter
42. (Perfect for eliminating) (eliminates) tough odors at their source

43. (This product) Eliminates (tough) odors at their source
44. (This product) prevents odors at their source caused by (bacteria) (mold) (mildew)
45. (This product) (is specially formulated to) eliminate odors from) {insert use sites}
46. To eliminate odors use (this product) around {insert use sites}
47. Provides immediate relief from mold odor or other foul odors.
48. Ideal when you open the boat up from winter storage to remove any lingering musty smells.
49. For best results, replace when odors reappear
50. The quick release, deep-penetrating vapor thoroughly and completely permeates the treated area to remove unpleasant odors.
51. For use throughout the year, or to prevent the formation of foul odors, use [ProKure G][PRODUCT].
52. Not an Air Freshener; Actually Controls Odor-Causing Bacteria, Mold and Mildew Odors
53. Molecularly eliminates odors (at their source)
54. [Eliminates -or- Eliminating] odors with science
55. Not just a (cover-up) (perfume) (air-freshener) (fragrance)
56. Does not just mask odors
57. The ClO₂ (Chlorine dioxide) breakthrough technology (that controls odor-causing bacteria, mold and mildew and chemical odors) (that eliminates odors) (at their source)
58. Patented vapor delivery system
59. Patented (odor eliminating) technology (eliminates odors)
60. Neutralizes odors
61. Remove foul odors caused by mold and mildew, cigar or cigarette smoke, spoiled food and other foul, musty smells.
62. Slow Release System – [This product] is designed to maintain air quality (while preventing the formation of future foul odor)
63. Fast Release System – [This product] is designed to provide immediate relief from (mold) odor (or other foul odors)
64. Formulated for professional [cultivator(s)]/ [(restoration contractor(s)) use
65. Formulated for the professional (cultivator)(restoration)(contractor)
66. No strong (heavy) perfumes (or residual odors) after ventilation
67. Leaves no visible (sticky) residue
68. The future of [odor control] [fresh]
69. Product works by oxidation, not by masking of odors.
70. Eliminates odors caused by fire smoke, tobacco smoke, musty odors, stale-cooking odors.
71. Leaves a fresh, clean scent

- 72. Cleans the air (you breathe)
- 73. Water-Activated
- 74. Humidity-activated
- 75. Gas Formula Packet
- 76. Smart Generator
- 77. Will not harm most vehicle interiors
- 78. Will not harm -or- Safe to use around [common vehicle interiors] [leather, vinyl, wood (inlay), carpeting, upholstery, glass, plastic]
- 79. No added [perfumes] [and] [or] [dyes] [and] [or] fragrance
- 80. No fragrance added
- 81. Fresh Scent
- 82. Clean Scent
- 83. Leaves a fresh, clean scent
- 84. No harsh (lingering) -or- smell -or odor -and/or- build-up after ventilation
- 85. No rinsing
- 86. [Compatible with -or- Suitable] [for use on] equipment surfaces
- 87. Compatible with -or- Suitable -for use on [insert use site] surfaces
- 88. Great for [commercial] [fleet] use
- 89. Just Add Water
- 90. [The answer to][dominate][The solution to] mold and mildew (odor-causing bacteria) (chemical) odors
- 91. ClO₂-Based Technology
- 92. Mold & Mildew Odor Eliminator
- 93. The Science of Smell
- 94. Five Star Fresh
- 95. No Volatile Organic Compounds (VOCs)
- 96. Reduces downtime (in restoration services)

ADDITIONAL MARKETING CLAIMS:
[Eliminates/prevents/controls (Specific) Odors:]

Smoke, Fire & Soot
 Water Damage Mold
 & Mildew Forensic

Animal Waste
 Cigarettes Chemicals
 Food Fuel Pepper

Spray Perspiration
 Sewage Skunk Tear
 Gas Tobacco Waste

Containers Urine
 Paint odors Human
 Waste Grease Traps

PACKAGING GRAPHICS

SAFETY PLACARD



DANGER
DO NOT ENTER

Chlorine Dioxide Gas Treatment in Progress

VENTILATE FOR ONE (1) HOUR BEFORE RE-ENTRY

TREATMENT START TIME: _____

TREATMENT END TIME: _____